

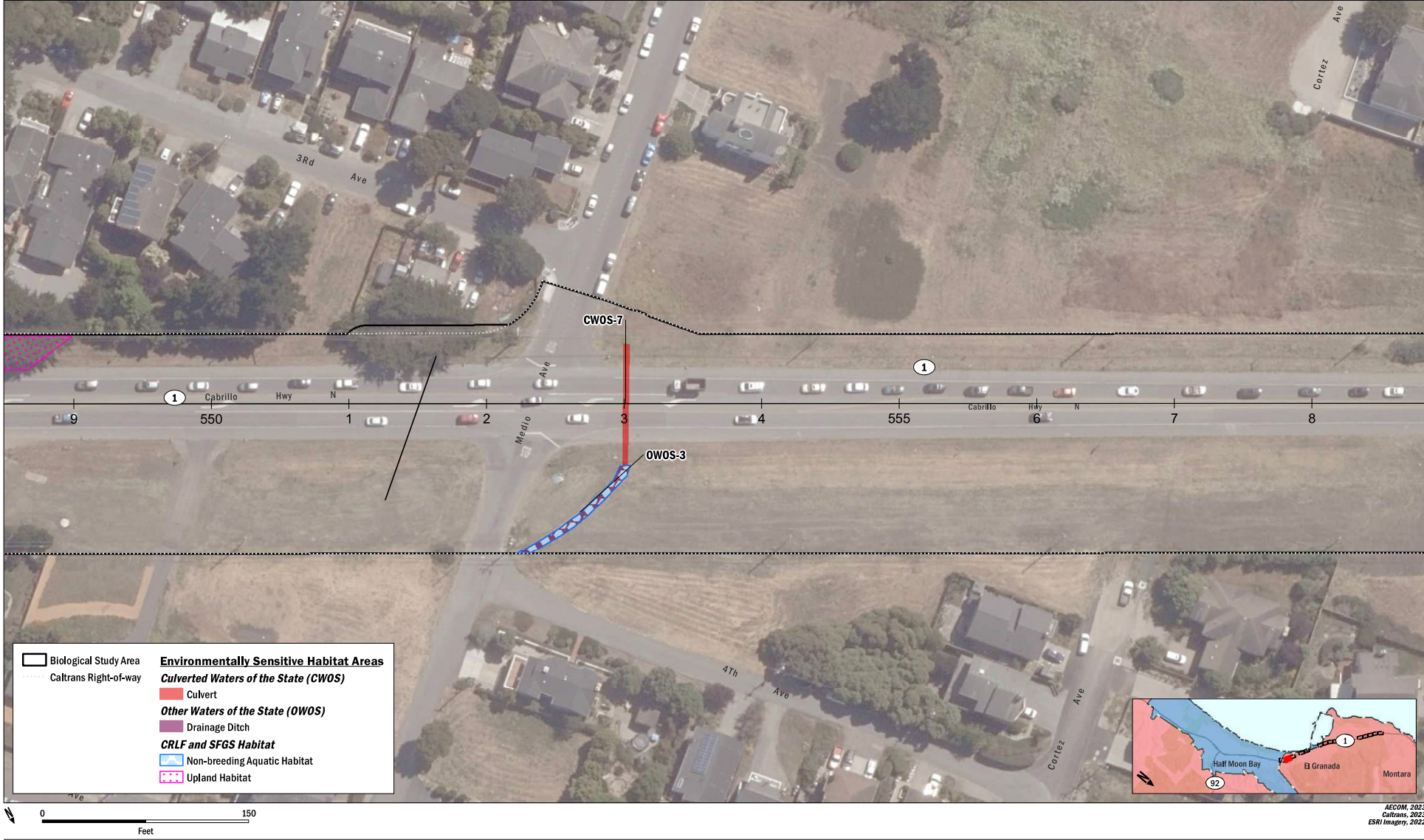
## **Appendix A. Existing Environmentally Sensitive Habitat Areas**



AECOM, 2023  
Caltrans, 2023  
ESRI Imagery, 2022

**FIGURE 3**  
 Impacts to Environmentally Sensitive Habitat Areas  
 San Mateo LCP  
 Page 1 of 17





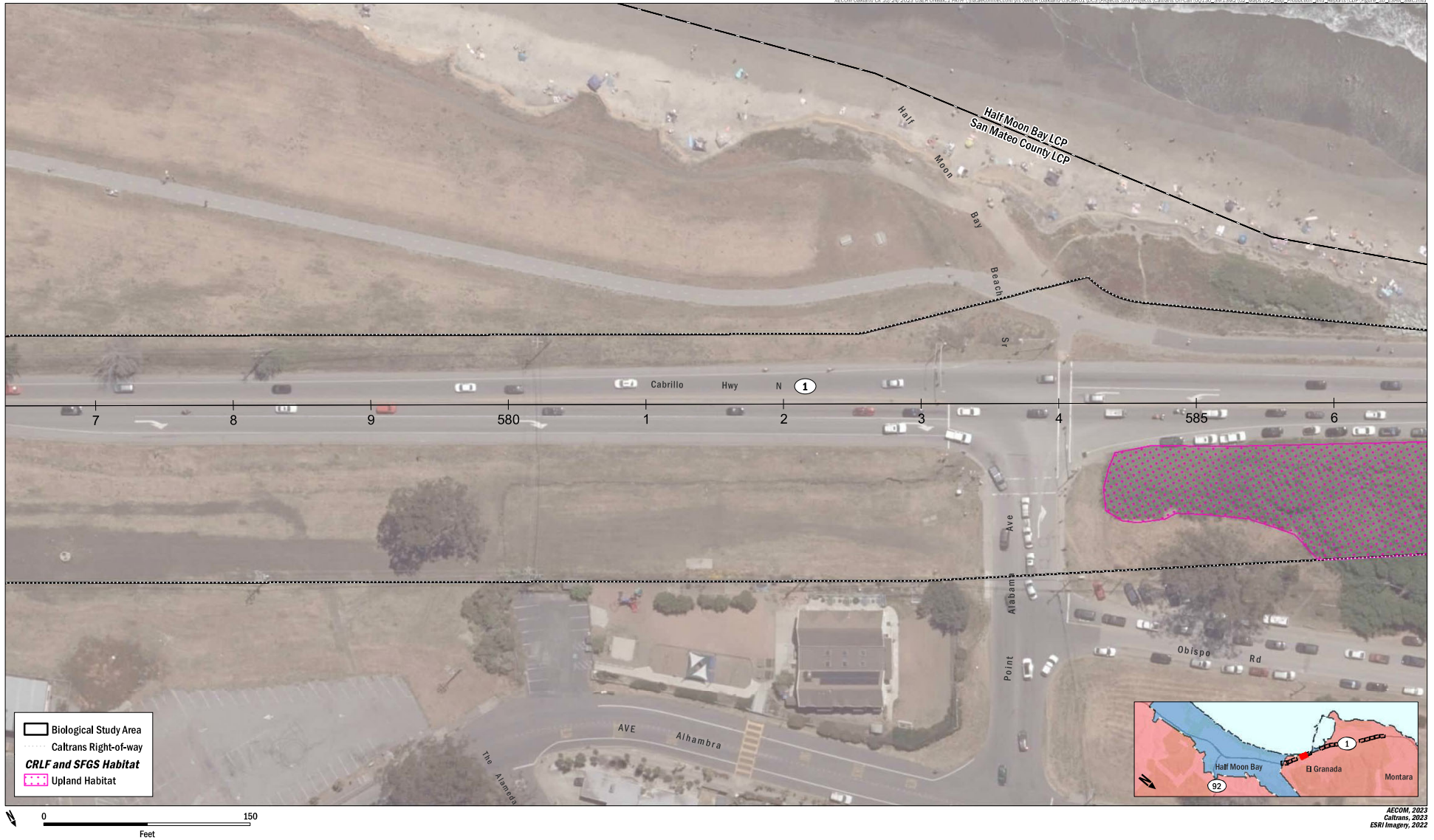
**FIGURE 3**  
Impacts to Environmentally Sensitive Habitat Areas  
San Mateo LCP  
Page 2 of 17





AECOM, 2023  
 Caltrans, 2023  
 ESRI Imagery, 2022









**FIGURE 3**  
 Impacts to Environmentally Sensitive Habitat Areas  
 San Mateo LCP  
 Page 5 of 17







AECOM, 2023  
 Caltrans, 2023  
 ESRI Imagery, 2022

**FIGURE 3**  
 Impacts to Environmentally Sensitive Habitat Areas  
 San Mateo LCP  
 Page 7 of 17

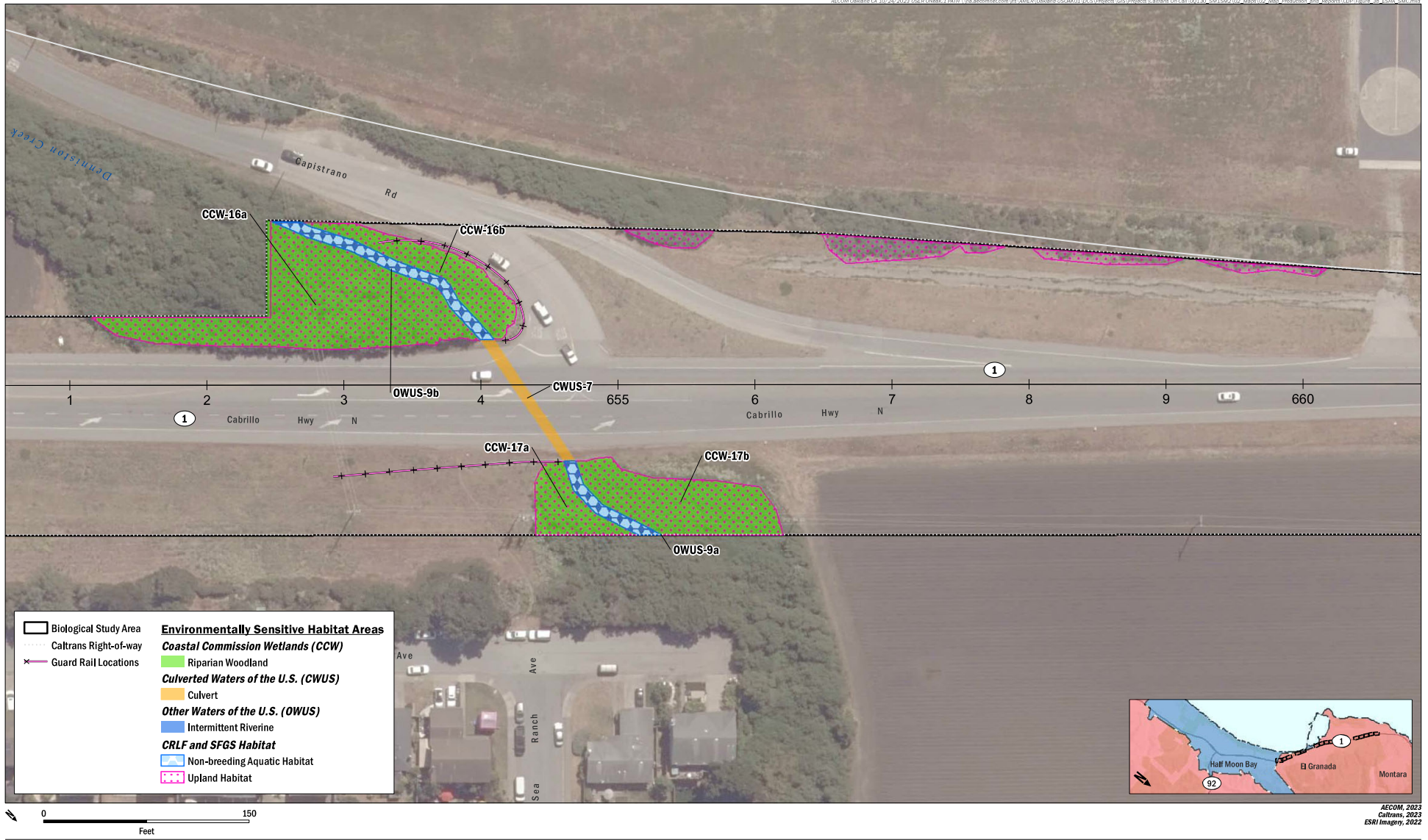




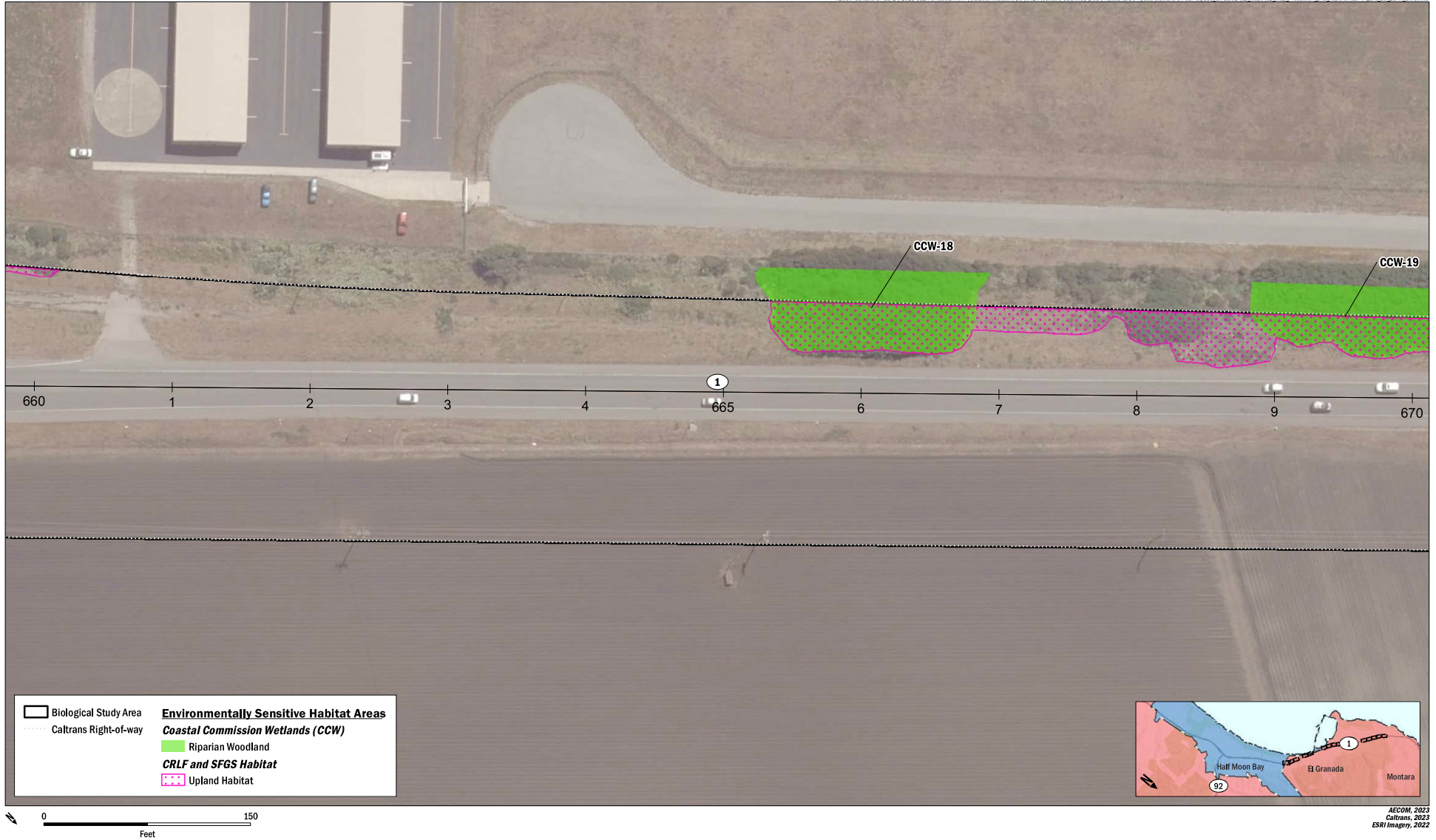
**FIGURE 3**  
 Impacts to Environmentally Sensitive Habitat Areas  
 San Mateo LCP  
 Page 8 of 17



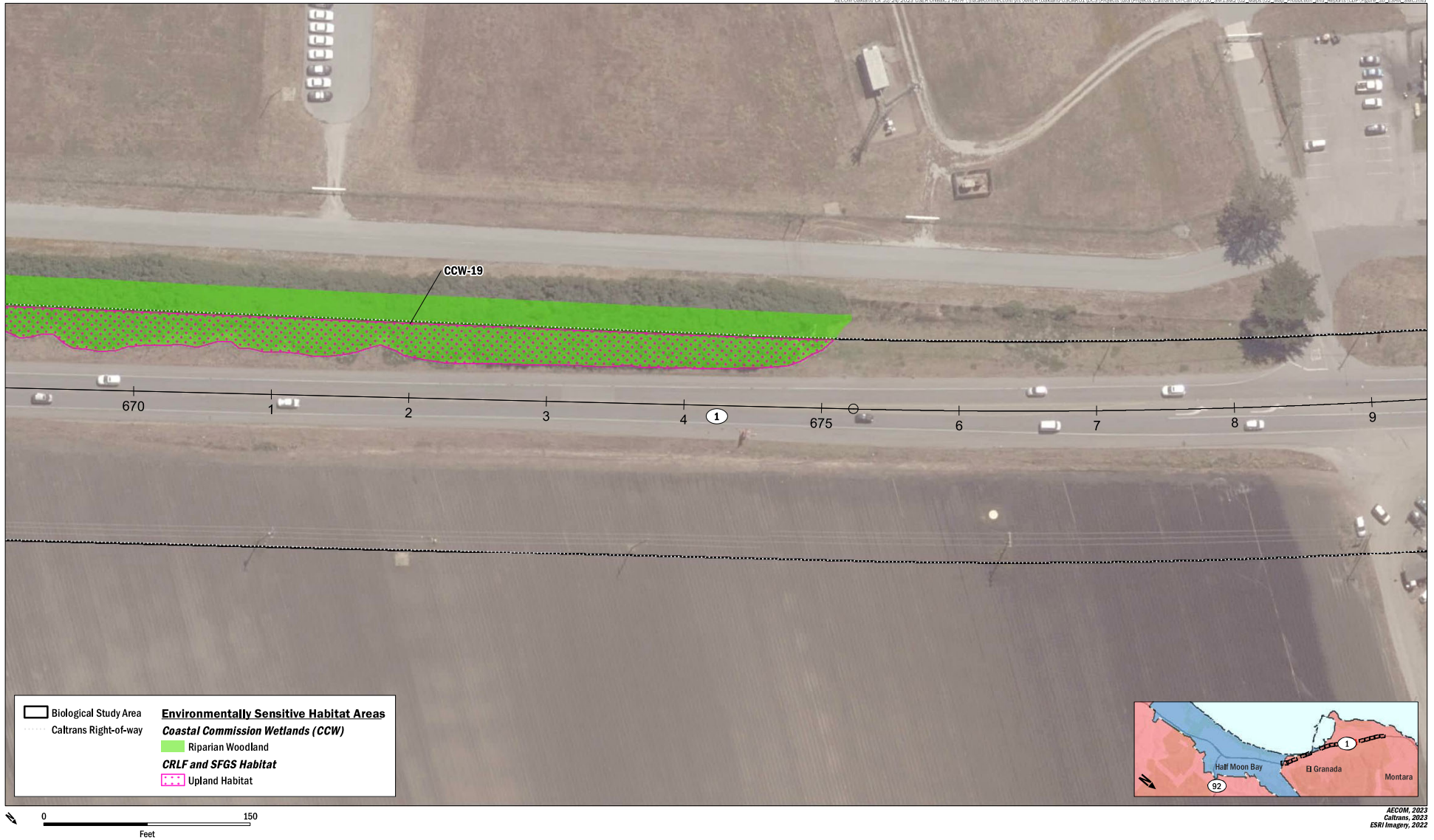




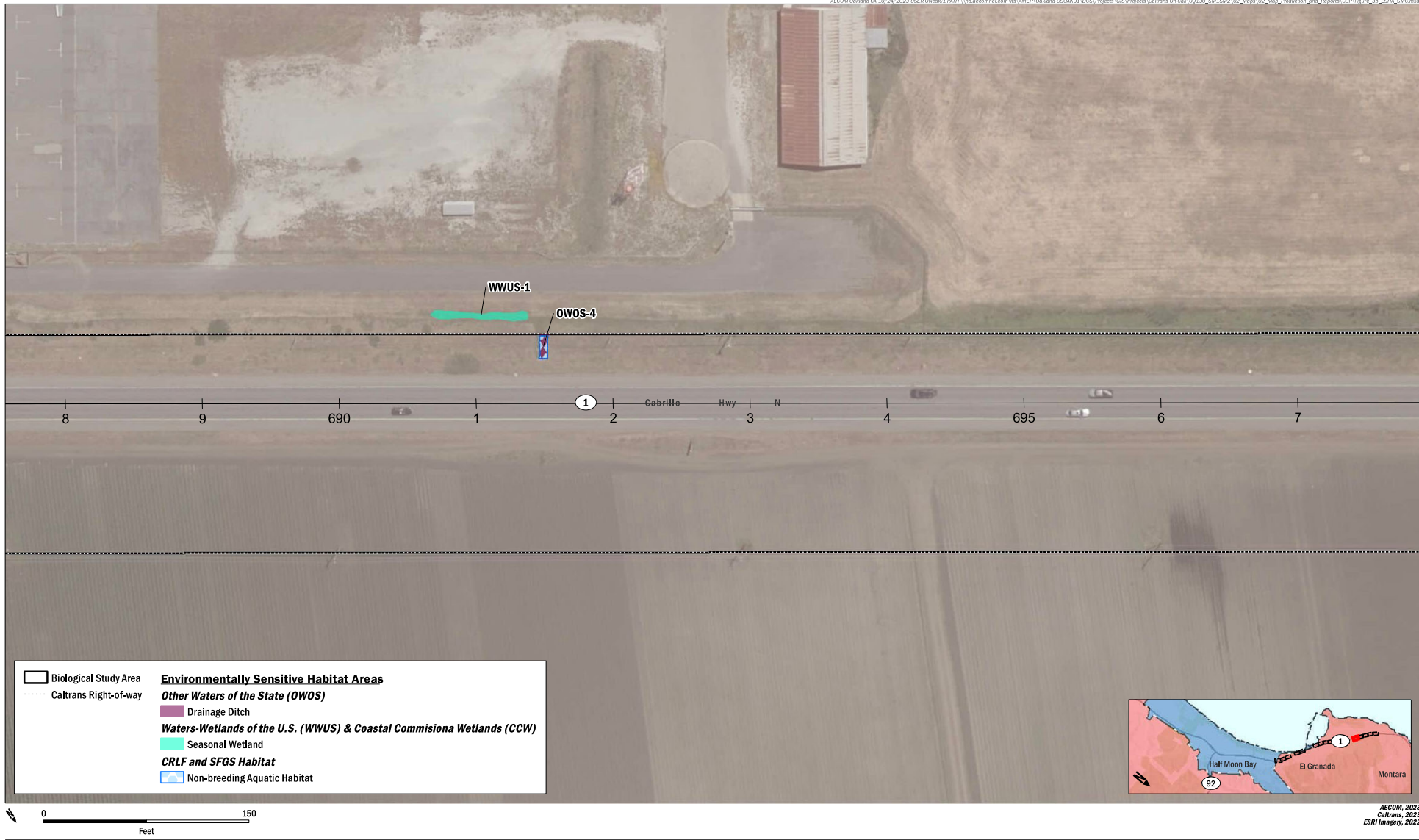
**FIGURE 3**  
 Impacts to Environmentally Sensitive Habitat Areas  
 San Mateo LCP  
 Page 10 of 17







AECOM, 2023  
Caltrans, 2023  
ESRI Imagery, 2022

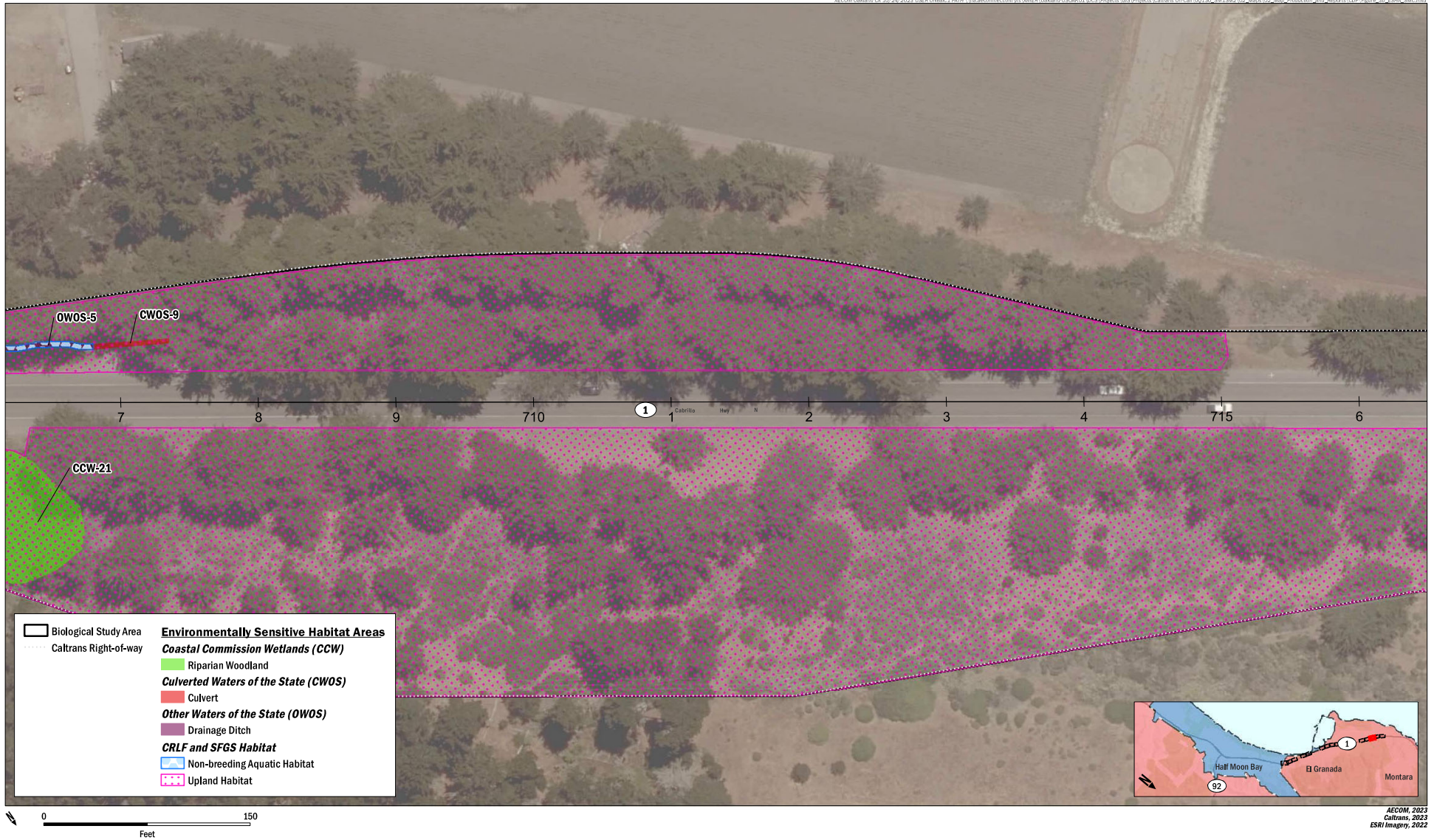






AECOM, 2023  
Caltrans, 2023  
ESRI Imagery, 2022

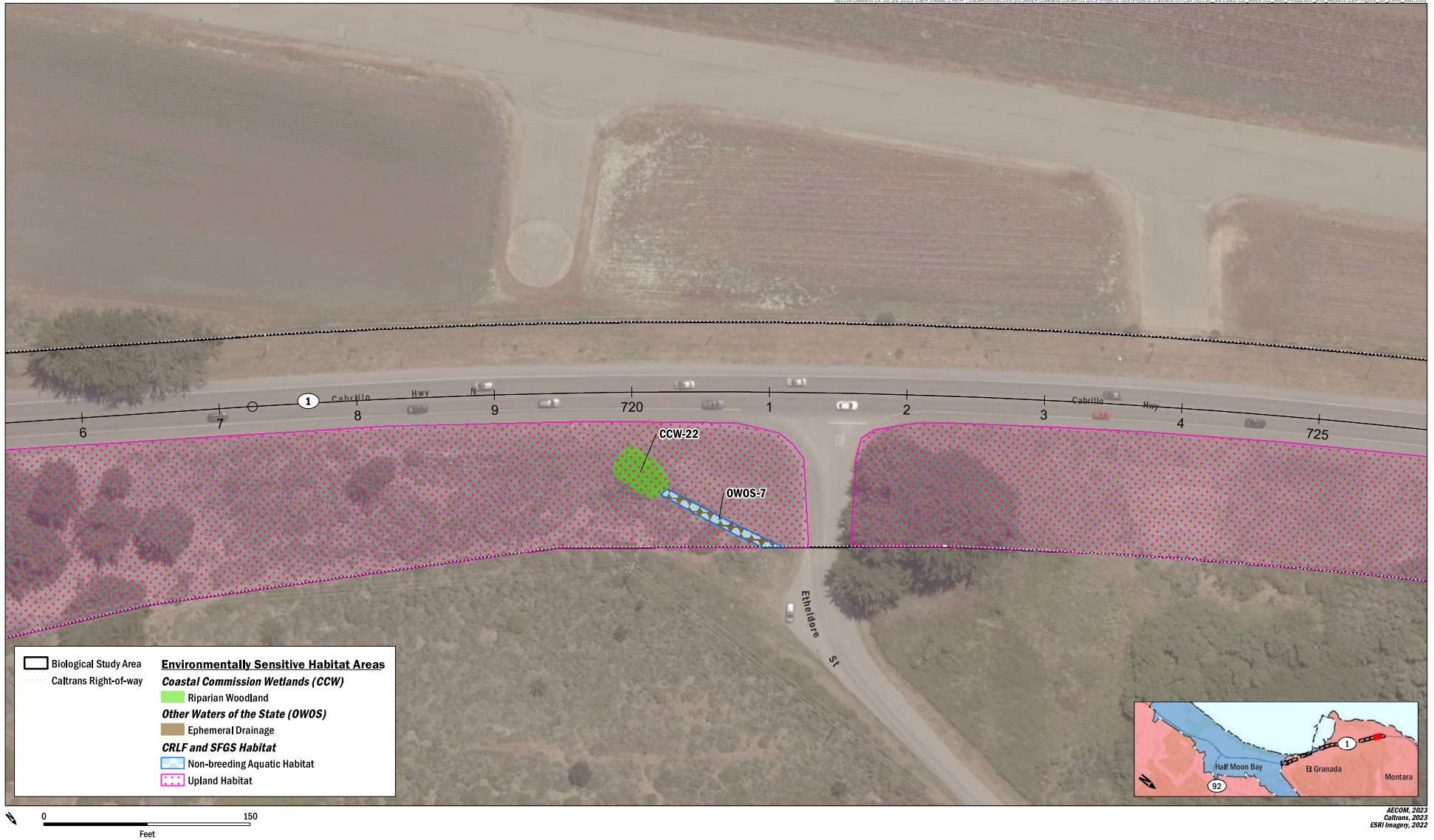




AECOM, 2023  
 Caltrans, 2023  
 ESRI Imagery, 2022

**FIGURE 3**  
 Impacts to Environmentally Sensitive Habitat Areas  
 San Mateo LCP  
 Page 15 of 17





AECOM, 2023  
Caltrans, 2023  
ESRI Imagery, 2022





**AECOM**  
Caltrans District 4  
State Route 1 Multi-Asset Roadway Rehabilitation Project  
San Mateo County, CA  
PM 27.5/34.8  
EA 04-0Q130 / Project ID 0418000053

**FIGURE 3**  
Impacts to Environmentally Sensitive Habitat Areas  
San Mateo LCP  
Page 17 of 17

AECOM, 2023  
Caltrans, 2023  
ESRI Imagery, 2022