

San Mateo County Radio System

Critical Communication Infrastructure for First Responders, Public Safety, and Operations

During disasters, effective & reliable communication across organizations is critical



County has Upgraded its Radio System for County-wide use to the **P25 Digital Wireless Industry Standard**



- National Standard
- Proven interoperability
- Multi-vendor ecosystems – compatible with different radio hardware
- Scalable and backwards capable
- Users include County, AMR, SamTrans, Millbrae, Half Moon Bay, and San Carlos

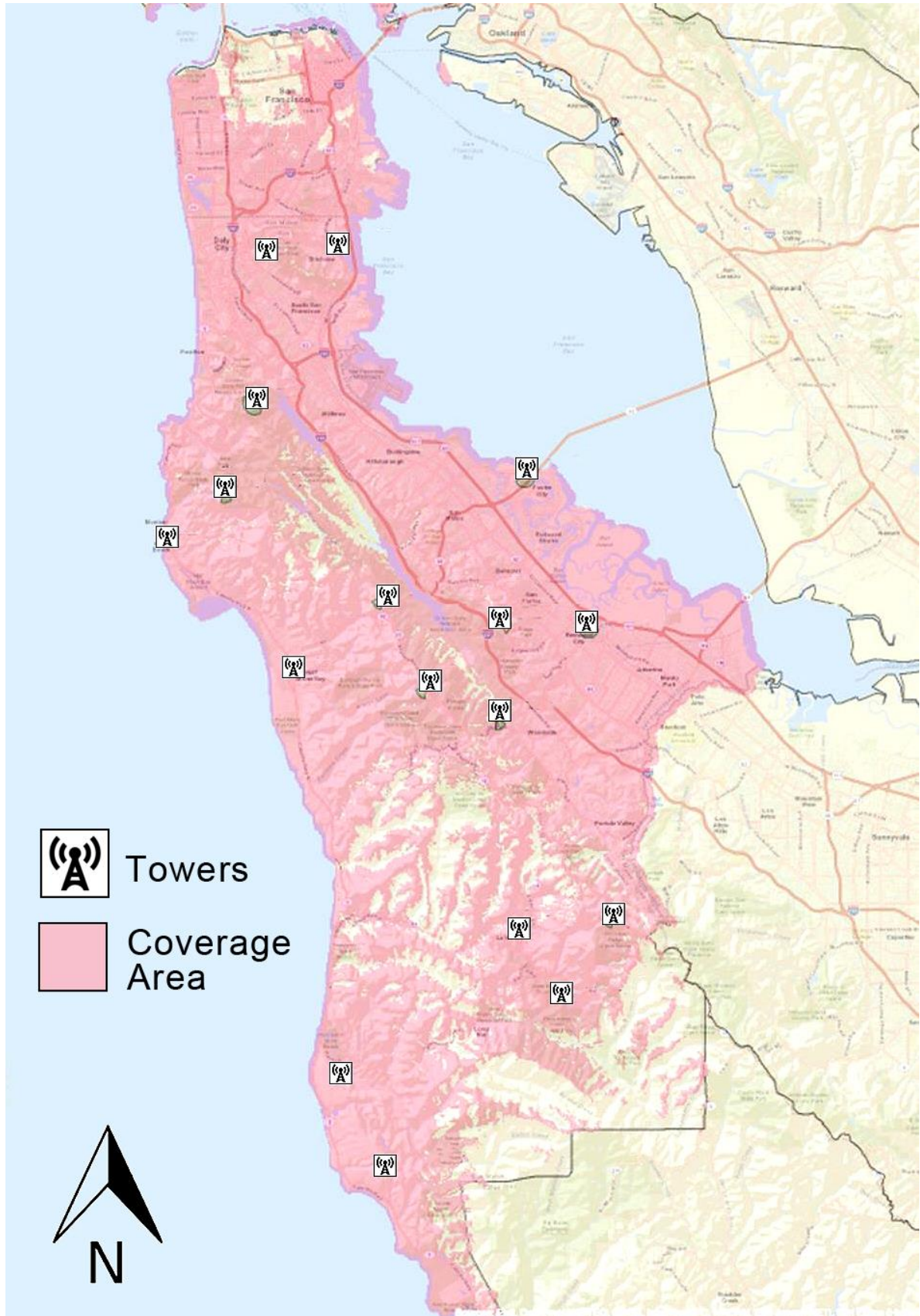
-
- **Improves Interoperability of Current System**
 - **Countywide Coverage**
 - **Decreases Reliance on Mutual Aid Channels**
 - **Designed for Mission-Critical Uses**
 - **Operational Cost: \$40/unit/month**



Improving government by building stronger connections



SMC Radio System Coverage



Improving government by building stronger connections

